



Coastal Protection and Restoration Authority



Coastal Protection & Restoration Authority Board Meeting

Wednesday, October 16, 2024

9:30 AM

SOWELA Regional Training Center Auditorium,

3820 Senator J. Bennett Johnston Avenue; Lake Charles, Louisiana 70615

The following constitute minutes of the Coastal Protection and Restoration Authority Board Meeting and are not a verbatim transcript of the proceedings. Audio and video recordings of the meetings are available for viewing and kept at the Office of the Governor-Coastal Activities Office in Baton Rouge, LA.

I. Call to Order

II. Roll Call

Chairman Gordon Dove	Present
Mr. Dustin Davidson for Sec. Tyler Gray, DENR	Present
Mr. Tyler Bosworth for Sec. Sheahan, LDWF	Present
Mr. Jerry Lang for Sec. Giacometto, DEQ	Present
Lieutenant Governor Billy Nungesser	Absent
Tony Alford, Gov's Advisory Comm	Present
Pres. Matthew Jewell, Barataria Basin	Present
Cong. Joseph Cao, Pontchartrain Basin	Absent
Chad Courville Teche/Vermillion	Present
Dwayne Bourgeois, Terrebonne Basin	Present
Bill Hidalgo, Atchafalaya Basin	Absent
Laurie Cormier, Calcasieu/Sabine Basin	Present
Robert Jordan Teche/Vermillion Parish	Present
John Lane, Breton Sound Basin	Present
Rep. Zeringue, Ex-officio, Designee of the Speaker of the House	Absent
Sen. Hensgens, Ex-officio, Designee of the President of the Senate	Absent

III. Welcoming – Jennifer Cobian, Calcasieu Parish

IV. Approval of Agenda

Motion by: Mr. Bourgeois

Seconded by: Mr. Alford

Unanimously Approved

V. Approval of Minutes

Motion by: Mr. Courville

Seconded by: Ms. Cormier

Unanimously Approved

VI. Old Business/Announcements

VII. USACE Update – Lt. Col. Nathaniel Weander , USACE (video:0:00:00)

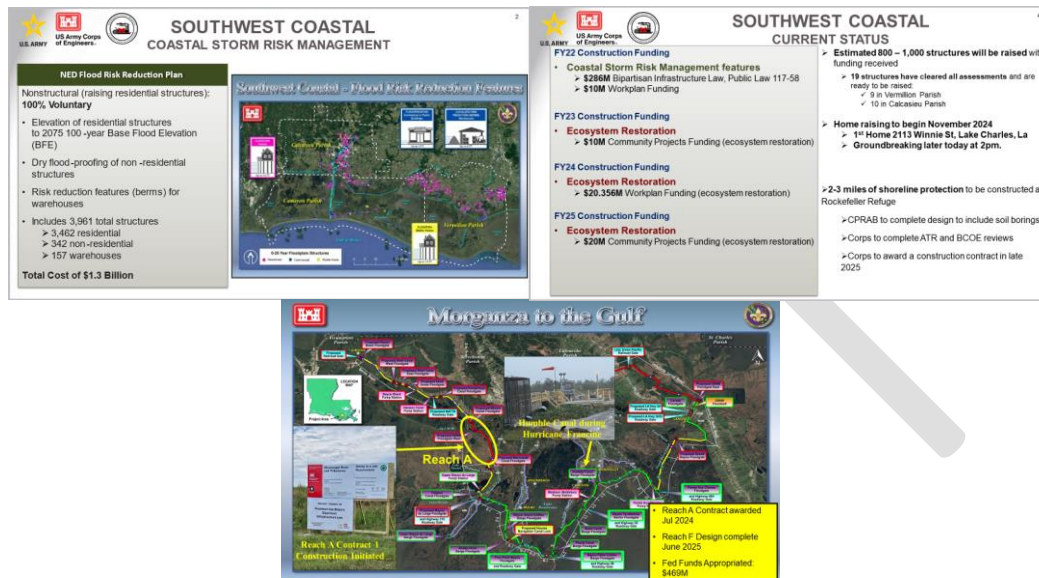
Lt. Col Weander updated the board on the Army Corps of Engineers plan to elevate as many as 3,500 homes (groundbreaking ceremony following board meeting) in the flood prone areas of SW Louisiana. It's a \$1.3B plan that could potentially flood proof nearly 500 structures within that same area. The funding includes \$286M from the bipartisan



Coastal Protection and Restoration Authority



infrastructure law and \$10M from USACE funding which could elevate as many as 1,000 structures.. The USACE officials have confirmed that 10 structures in Calcasieu and 9 structures in Vermillion have been cleared and are ready to be elevated. The Lt. Col also updated board members on 9 Marsh Restoration Features, 5 Shoreline Protection/Stabilization features and 35 Chenier Reforestation features, totaling estimated cost: \$5.5 Billion.



viii. CPRA Implementation Update – Glenn Ledet, Jr., CPRA (video: 07:00:00)

- No Name Bayou Marsh Creation – Travis Moore, CPRA
- Mr. Ledet provided the latest progress of various projects around the coast. CPRA has 109 Active Projects with 44 of them are in construction, 60 in engineering and design, with 5 more in the planning stage. Of the projects now being constructed 35 are creating marsh. **Construction Update:** Mr. Ledet highlighted the following projects: **Terrebonne HNC Island Restoration**-This project will use dredged sediment to restore Terrebonne Bayou HNC island to approximately 50 acres. The existing rock ring will be enhanced and enlarged to a 50-acre area to serve as containment for dredged sediment and provide shoreline protection for the island. The restored island footprint and increased elevation will increase the abundance and quality of nesting habitat for a number of colonial nesting waterbirds including Brown Pelicans, wading birds, terns, and Laughing Gulls. Access Dredging is near 60% complete around the island to allow subcontractor Patriot Construction to begin placement geotextile fabric and marine mattresses. Dredge is set to mobilize in December 2024 after all rock containment and breakwaters are constructed. **Engineering & Design Updates:** **Cameron Gulf Shoreline Protection**- The project involves the construction of 5,294 linear feet of breakwater structures along the Gulf of Mexico shoreline in Cameron Parish to reduce erosion at Rutherford, Long and Little Florida beaches. The project will provide a benefited value to 24 acres of marsh and prevent/minimize shoreline retreat. The project is estimated coat of \$14M funded through CWPPRA and expected to go to bid in November. **Restoration Update:** **Long Point Bayou Marsh Creation**- This project is a federal and state collaboration among the Louisiana Oil Spill Coordinator's Office, the LDEQ, the DENR, the LDWF. The CPRA,the USACE, the EPA, and the Natural Resource Trustees. The design phase of the project was funded through CWPPRA. At this time, work is approximately 98% complete with pre-final inspection anticipated in mid to late October of 2024.

109 ACTIVE PROJECTS	44	60	5
PROJECT TYPE	CONSTRUCTION	F & D	PLANNING
HURRICANE PROTECTION (36)	17	15	4
MARSH CREATION (35)	11	24	
BANK STABILIZATION (1)		1	
RIDGE RESTORATION (2)		2	
SHORELINE PROTECTION (9)	6	3	
BARRIER ISLANDS/HEADLANDS (4)	1	3	
DIVERSIONS (3)	2	1	
HYDROLOGIC RESTORATION (6)	1	5	
OYSTER BARRIER REEF (0)			
RECREATIONAL USE (3)	3		
EARTHEN TERRACES (1)		1	
OTHER (9)	3	5	1



**CONSTRUCTION
UPDATES**

Terrebonne HNC Island Restoration





**ENGINEERING
& DESIGN
UPDATES**

Cameron Gulf Shoreline Protection






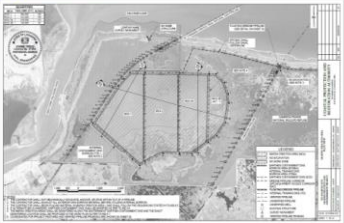
LONG POINT BAYOU MARSH CREATION
Cameron Parish



- NO NAME BAYOU MARSH CREATION:** Mr. Moore updated the board on the general project information regarding this project, it's location is Calcasieu-Sabine Basin, Cameron Parish, with it's funding source being CWPPRA a \$14.8M construction contract that will create/restore 466 acres of marsh with expected completion by the end of May 2025. This will include pumping of approximately 1.6 million cy of sediment dredged from Calcasieu Lake to fill open water to an elevation above sea level.



NO NAME BAYOU MARSH CREATION
Cameron Parish



Marsh Creation Area Overview

- Acres: 466
- Contract Volume: 1,654,000 CY
- Max. Fill Elevation: 1.5' ± 0.5 (tolerance)
- External Containment Dike
 - Length: 17,430'
 - Crown Width: 5.0'
 - Crown Elevation: +3.5'
- External ECD borrow along western edge
- 1-42" Cheniere Creole Pipeline – 150' no excavation zone for ECD

Mr. Ledet concluded his update to the board with Hurricane Laura Repair Updates (see slides below) and additional CPRA updates.

Storm Damage Repairs from Hurricane Laura - Cameron-Creole Project



Lambert Bayou - Extension of Sheet Pile Levee Repair & Stone Armoring (Below)



Grand Bayou Water Control Structure Mechanical Repairs & Scour Repairs - Stone Armoring (Below)



No Name Bayou Water Control Structure Repairs & Levee Sheet Pile Scour Repair (Below)



Scour Repairs at Each End of Mangrove Interior Canal Plug - Stone Armoring (Left)

Storm Damage Repairs from Hurricane Laura

Rockefeller Refuge and Freshwater Introduction South of Highway 82

Rockefeller Refuge Shoreline Stabilization

- No damages observed on Foreshore Breakwaters
- Replacement of 4 Lighted Warning Signs and Piles
 - F/W Category G (2022) - \$56,000
- Replacement of 5 additional signs and piles related to O&M
 - CWPPRA 85% Federal/15% State Cost Share
 - Estimated Construction Cost - \$38,000
- Spring 2025 Bid Opening
- Estimated Cost for 9 Locations: \$96,000

Freshwater Introduction South of Highway 82

- **Project Features Impacted**—4 of the 5 Water Control Structures received major damages to the Inlet side, minor damages to the outlet side, and significant levee and stone armoring erosion
- Currently seeking approval through FEMA for Hazard Mitigation Funds with more resilient design
 - Replace with Resilient Concrete T-Panel Design Cost - \$6,942,000
- Design to be finalized after funding decision

FEMA Obligation – 90% Federal / 10% State Cost Share



- IX. **Rockefeller Wildlife Refuge Shoreline Protection Efforts – Rudy Simoneaux, CPRA (video: 01:06:17)**
 Mr. Simoneaux briefed the board on the Rockefeller Wildlife Refuge in Cameron. The property was donated by Rockefeller Foundation in 1919. It's one of the most biologically diverse wildlife areas in the U.S and has been managed by the LDWF for over 100yrs.
 A contract for this project is to be awarded in late 2025, building 2 to 3 miles of shoreline protection along the Refuge.

Rockefeller Refuge Shoreline Protection Southwest Coastal Component (ME0041)



Rockefeller Refuge Shoreline Protection Southwest Coastal Component (ME-0041)

Design Process and Status:

- Project Initiation (August 2024)
- CPRA executed design contract/task order with Design Team (September 2024)
- Kickoff Meeting and Scoping Discussion with USACE (September 2024)
- Finalize Design Scope and Schedule (in progress)
- Data Collection (primarily Gulf of Mexico surveys and geotechnical data)
- Basis of Design/Final Design/Development of Bid Package (by CPRA)
- Regulatory/Permitting
- Construction (by USACE)

- x. **Calcasieu-Sabine Hydrologic Restoration and Large-Scale Marsh Creation– Jessica Diez and Andrew Beall, CPRA (video:01:26:28)** Ms. Diez & Mr. Beall provided updated information to the board regarding the \$261M Calcasieu-Sabine-Large Scale Marsh Creation, which is funded with BP Deepwater Horizon Oil Spill fine funds. The goal of this project is to reduce the rate of land loss in the Calcasieu Sabine Basin by improving drainage, and dredged sediment input. Two main components are drainage structures (with backflow prevention to improve marsh drainage, and large scale marsh creation & nourishment to increase elevation capital ~2,000 acres). Design work for marsh construction using beneficial use sediment from the ship channel won't be completed until the end of 2025, and construction of the marsh with this material will require funding in the Corps' federal budget in either fiscal year 2026 or 2028.

Project Features

A. Lake Rim Drainage

- Seven (7) proposed gravity drainage structures with backflow prevention

B. Conveyance

- Up to 18 miles of channel improvements
- Improve drainage from back of the marsh to the Lake Rim
- Focused on dredging of historic bayous

C. Marsh Creation

- Over 2,000 of 7,000 proposed acres to be built through CS -87
- Using dredged material from channel improvements and CSC



Next Steps

Lake-Rim Drainage

- JPA Submitted for all 7 LRD structures
- HDR Team continuing 60% Design (anticipated October 2024)

Conveyance Improvements & MC/N

- JPA Submitted – southern borrow canal cleanout included in LRD JPA
- CPRA conducting detailed design

BUDMAT

- DIR in development (expected May 2025), TSP approved Dec. 2023
- Field data collection ongoing

- xi. **Success of the Rabbit Island Restoration – Todd Baker, CPRA & Jon Wiebe, LDWF (video:01:59:17)**
 The board was briefed by Mr. Baker & Mr. Wiebe on the now completed \$16.4 million dollar Rabbit Island project which was funded with BP Deepwater Horizon Oil Spill funds. To date, the project has approximately 102 acres of island restored, which includes 81 acres of bird nesting habitat and 21 acres of secretive marsh bird nesting habitat. 167 Acres enhanced (65 acres) or restored. The island is the only Brown Pelican colony in Southwest Louisiana. This project has produced more than 107,000 fledglings since 2021 at a cost of

\$153/fledgling. If production stays the same next year the cost will be \$119/fledgling and decrease each following year according to Mr. Wiebe. Mr. Baker stated that prior to the project, the wetlands on the isle were only 1ft above sea level, and the success rate of birds nesting on the island had dropped to less than 50%. Was the \$16.4M Rabbit Island Successful? Success for most projects is measured by the quantity of acres created or protected. Rabbit Island's success was to be measured by number of birds produced.



How Did the Birds Respond?

	Number of Nests			Percent Increase 2018 vs 2022
	2018 Pre-Construction	2021 "Year 0"	2022 Year 1	
Wading Birds	4,278	2,869	7,941	86%
Terns/Skimers	573	3,214	6,596	1,051%
Laughing Gulls	9,647	5,031	13,887	44%
Brown Pelicans	1,340	521	4,043	202%
Total	15,838	11,635	32,467	105%

Was Louisiana's \$16.4 M Investment in Rabbit Island Successful?

Goals

- **Restore lost birds** by facilitating additional production and/or reduced mortality of injured bird species
- **Restore or protect habitats** on which injured birds rely
- **Restore injured birds by species** where actions would provide the greatest benefits within geographic ranges that include the Gulf of Mexico.

Accomplishments

- Rabbit Island is an integral and highly **successful investment that continues to restore** DWH-impacted avian resources
- Louisiana's CWB's are habitat limited ... so our ability to **create, enhance and protect** these critical habitats like Rabbit Island will help to ensure long-term species viability
- Rabbit Island restoration continues to **benefit a diverse array of avian species prioritized as Species of Greatest Conservation Need**

xii. Public Comment

xiii. Adjourn

Motion by: Mr. Bourgeois
Seconded by: unanimous.